



BEFORE

LOW SHRUBS, PERENNIALS, AND ANNUALS

CENTER MONUMENT STRUCTURE

DECORATIVE PAVEMENT

FOREGROUND PLANTING

BACKGROUND PLANTING

CLEAN AND POLISH SIGN

UPDATED LIGHTING



AFTER

BRIGHT WATER SUBDIVISION

CONCEPTUAL PLAN
GWINNETT COUNTY, GEORGIA
MAY 24, 2016

MAIN ENTRANCE



BEFORE

NEW BACKGROUND PLANTING

NEW ENTRY MONUMENT
(REDUCED VERSION OF MAIN ENTRANCE)

FOREGROUND PLANTING

DECORATIVE PAVEMENT

UPGRADED LIGHTING

REDEFINED BED LINE

PRUNE TREES UNDER POWER LINES



AFTER

BRIGHT WATER SUBDIVISION

CONCEPTUAL PLAN
GWINNETT COUNTY, GEORGIA
MAY 24, 2016

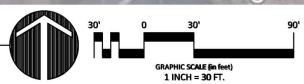
SECONDARY ENTRANCE

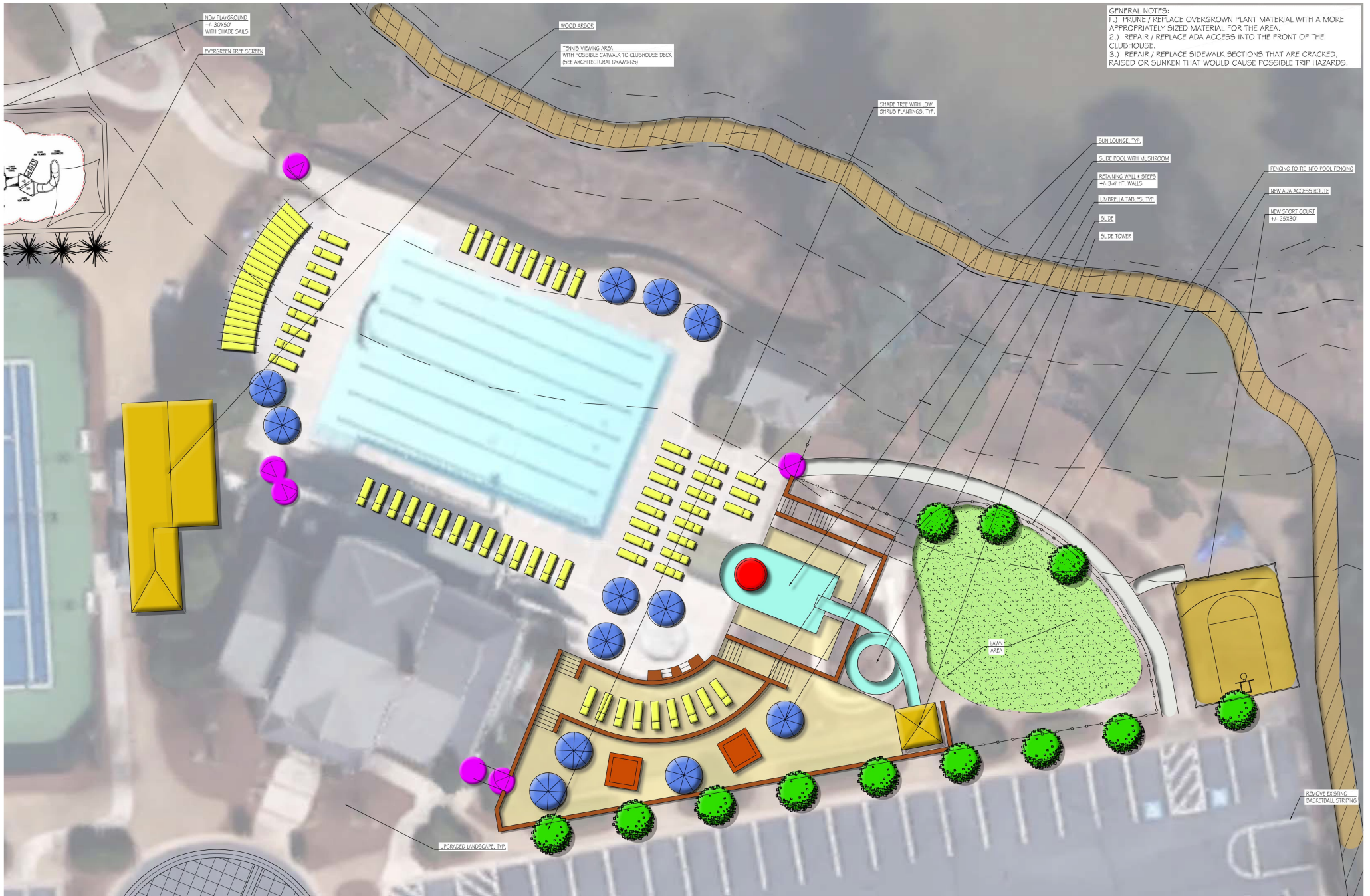
GENERAL NOTES:
 1.) PRUNE / REPLACE OVERGROWN PLANT MATERIAL WITH A MORE APPROPRIATELY SIZED MATERIAL FOR THE AREA.
 2.) REPAIR / REPLACE ADA ACCESS INTO THE FRONT OF THE CLUBHOUSE.
 3.) REPAIR / REPLACE SIDEWALK SECTIONS THAT ARE CRACKED, RAISED OR SUNKEN THAT WOULD CAUSE POSSIBLE TRIP HAZARDS.



**BRIGHT WATER SUBDIVISION
 MASTER PLAN - AMENITY AREA PLAN**

WEBB GIN HOUSE ROAD, SNELLVILLE, GEORGIA
 MWP-246-23326-0000001

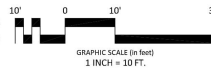




GENERAL NOTES:
 1.) PRUNE / REPLACE OVERGROWN PLANT MATERIAL WITH A MORE APPROPRIATELY SIZED MATERIAL FOR THE AREA.
 2.) REPAIR / REPLACE ADA ACCESS INTO THE FRONT OF THE CLUBHOUSE.
 3.) REPAIR / REPLACE SIDEWALK SECTIONS THAT ARE CRACKED, RAISED OR SUNKEN THAT WOULD CAUSE POSSIBLE TRIP HAZARDS.

BRIGHT WATER SUBDIVISION
MASTER PLAN - AMENITY AREA PLAN

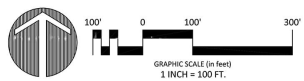
WEBB GIN HOUSE ROAD, SNELLVILLE, GEORGIA
 JUNE 16, 2016 (16-0001)



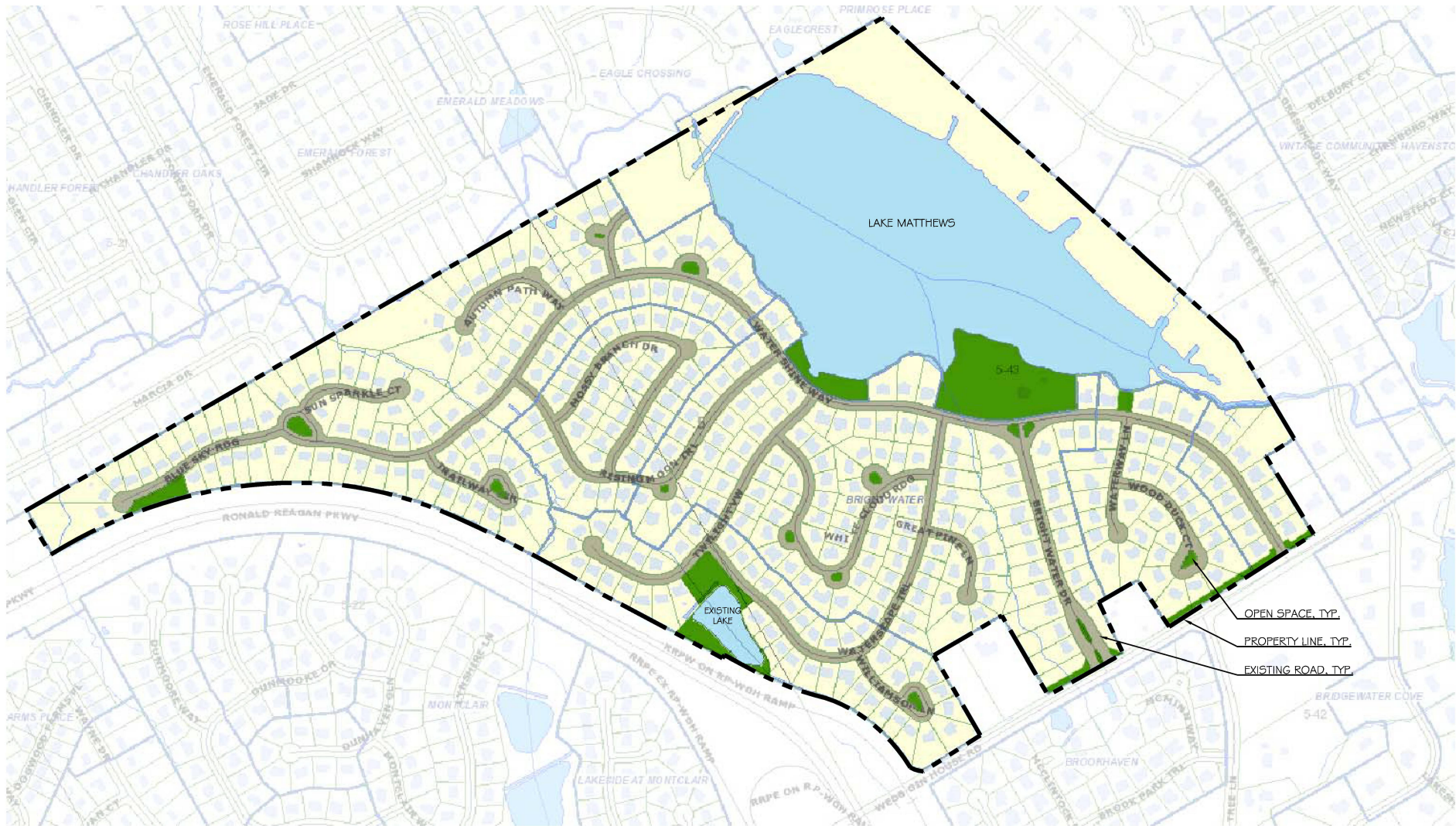


BRIGHT WATER SUBDIVISION
MASTER PLAN - LAKE TRAIL CONCEPT PLAN

WEBB GIN HOUSE ROAD, SNELLVILLE, GEORGIA
 JUNE 14, 2016 (16-0101)

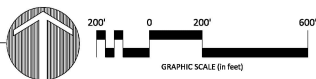


TRAIL LEGEND	
—	Natural Path
—	Boardwalk
—	Bridge
—	Existing Sidewalk
*	Destination

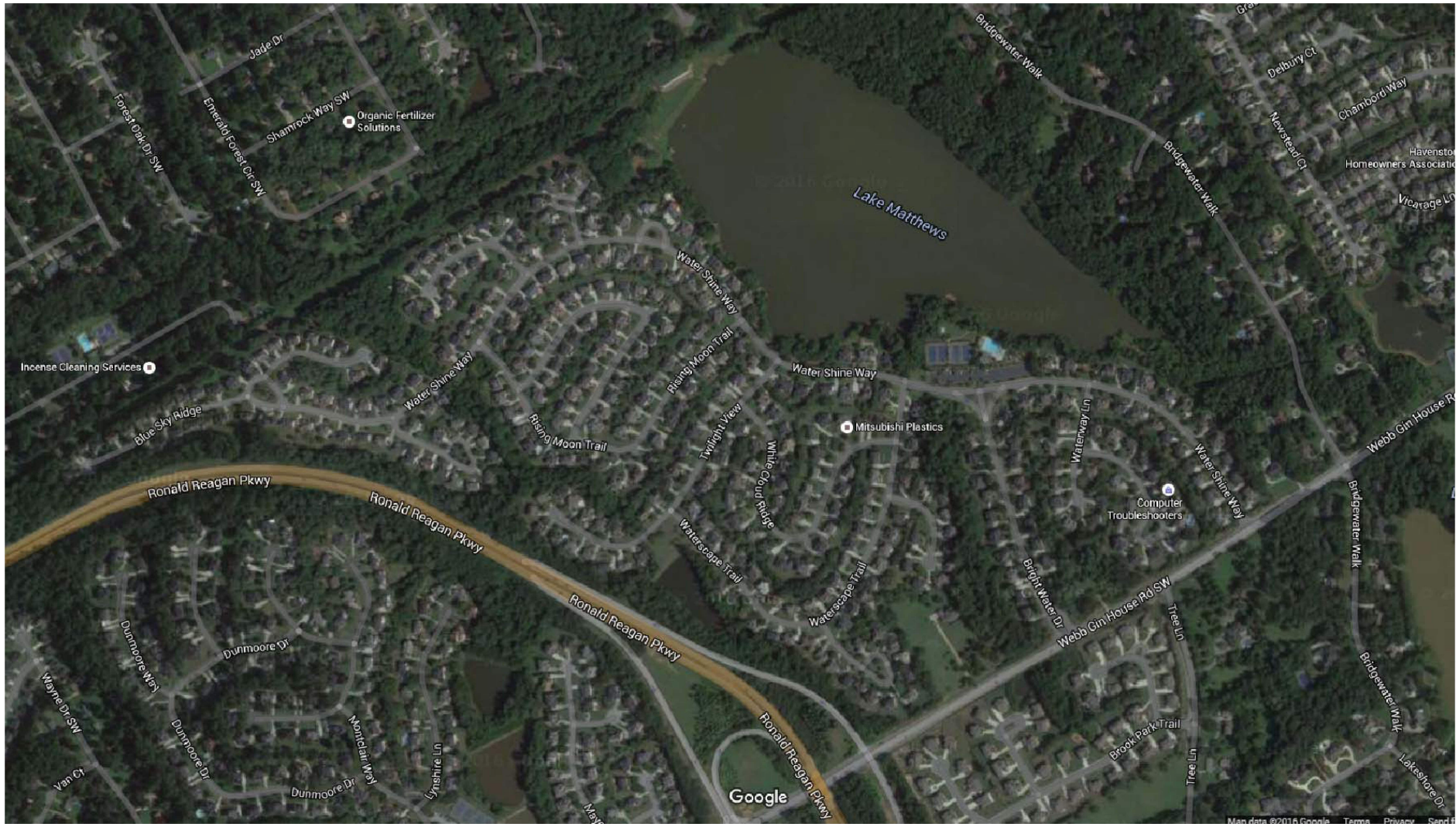


**BRIGHT WATER SUBDIVISION
CONCEPTUAL MASTER PLAN**

GWINNETT COUNTY, GEORGIA
FEBRUARY 29, 2016

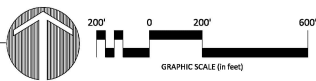


C-01-SITE PLAN



**BRIGHT WATER SUBDIVISION
CONCEPTUAL MASTER PLAN**

GWINNETT COUNTY, GEORGIA
FEBRUARY 29, 2016



C-01-SITE PLAN

